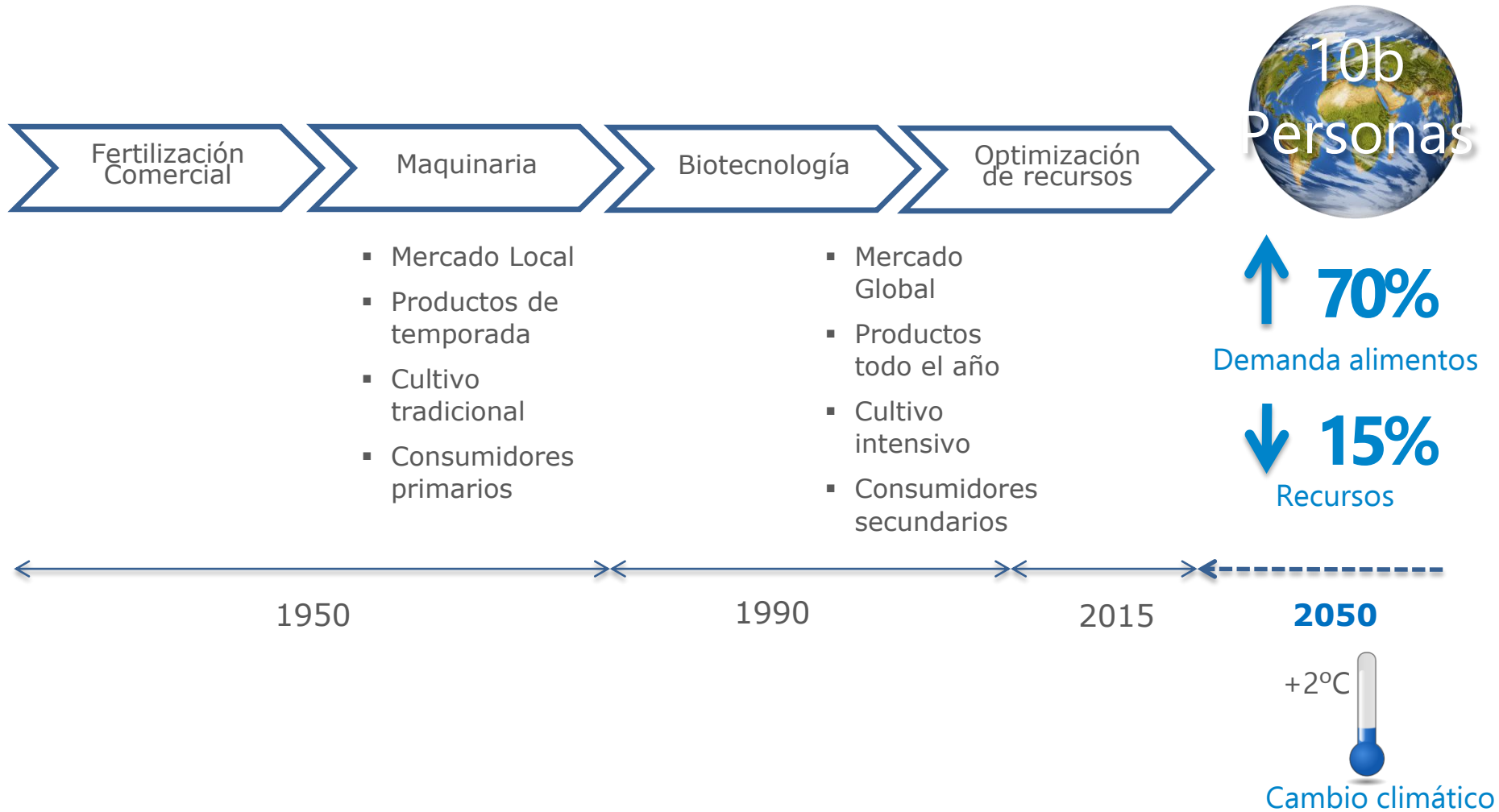




# Inteligencia Artificial para la Toma de Decisiones

# The agro-sector evolution



**El Mercado demanda nueva tecnología**

# Cadena de suministro

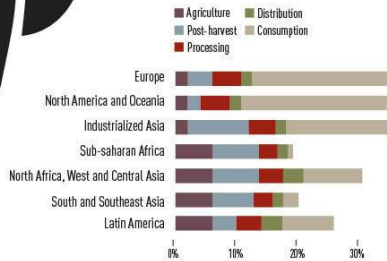
FAO



## 30% CEREALS FOOD LOSSES

In industrialized countries, consumers throw away 286 million tonnes of cereal products.

763 billion boxes of pasta



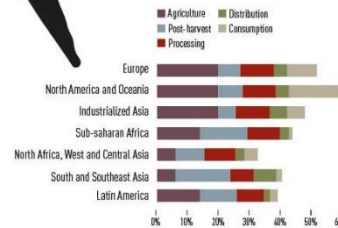
©FAO 2012



## 45% ROOTS & TUBERS FOOD LOSSES

In North America & Oceania alone, 5 814 000 tonnes of roots and tubers are wasted at the consumption stage alone.

This equates to just over 1 billion bags of potatoes.



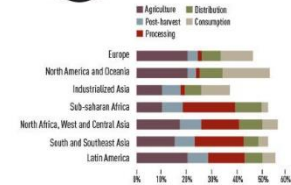
©FAO 2012



## 45% FRUIT & VEGETABLES FOOD LOSSES

Along with roots and tubers, fruit and vegetables have the highest wastage rates of any food products; almost half of all the fruit and vegetables produced are wasted.

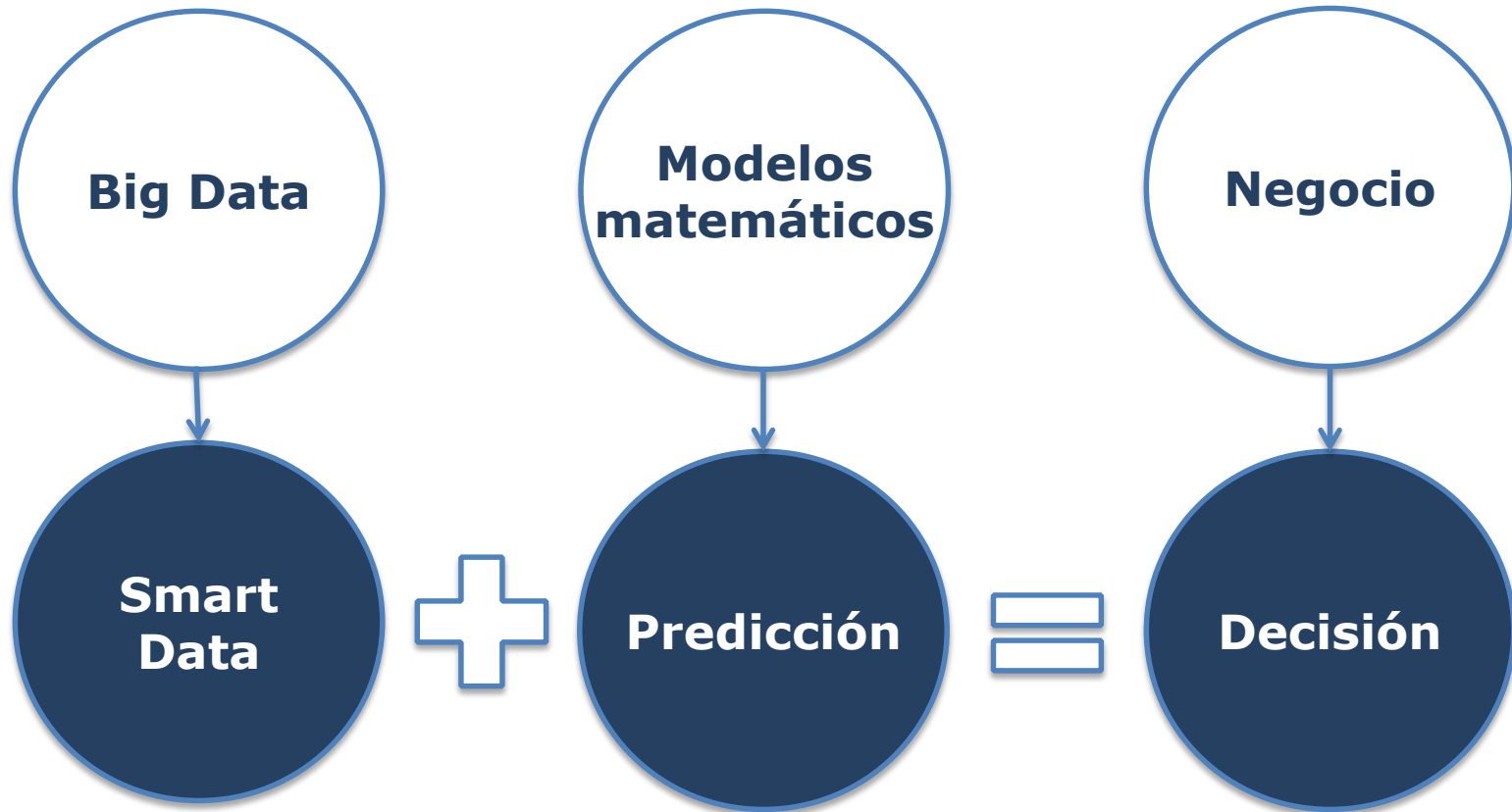
3.7 trillion apples



©FAO 2012

La cadena de suministro y su integración: competitividad

# ec2ce: servicios de inteligencia artificial



obteniendo valor a partir del Big Data

## Cadena Suministro

- optimizar logística y mano de obra
- previsión y planificación
- acopio en comercializadora

## Mkting Retail

- previsión de demanda
- comportamiento cliente
- estrategia de marketing



## Mercados

- estrategias de trading
- coberturas - hedge
- tendencias de precios
- decisiones comerciales

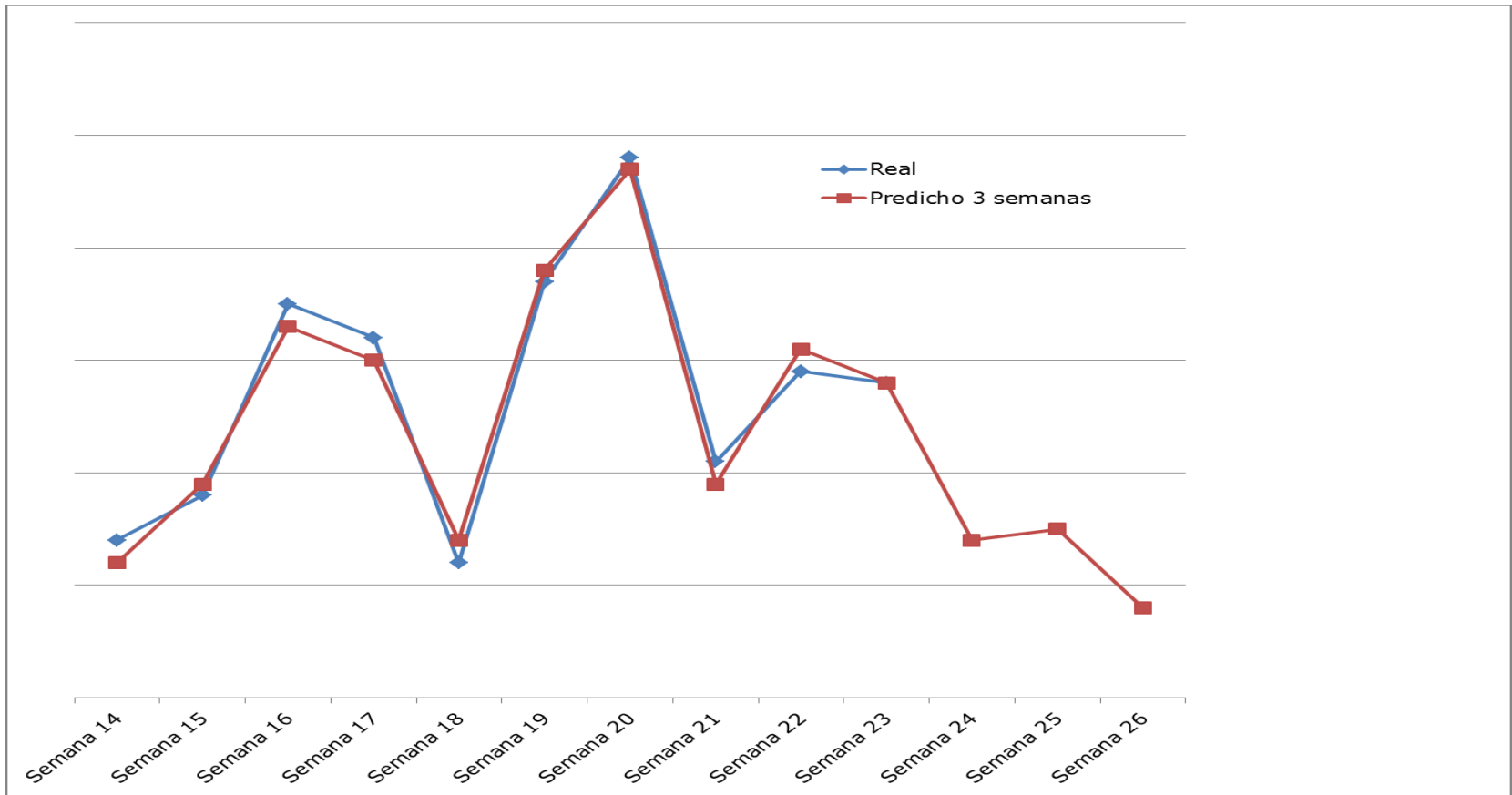
## Gestión agraria

- Maximizar productividad
- Optimizar producción de semillas
- Minimizar uso de pesticidas
- Optimizar fertirrigación



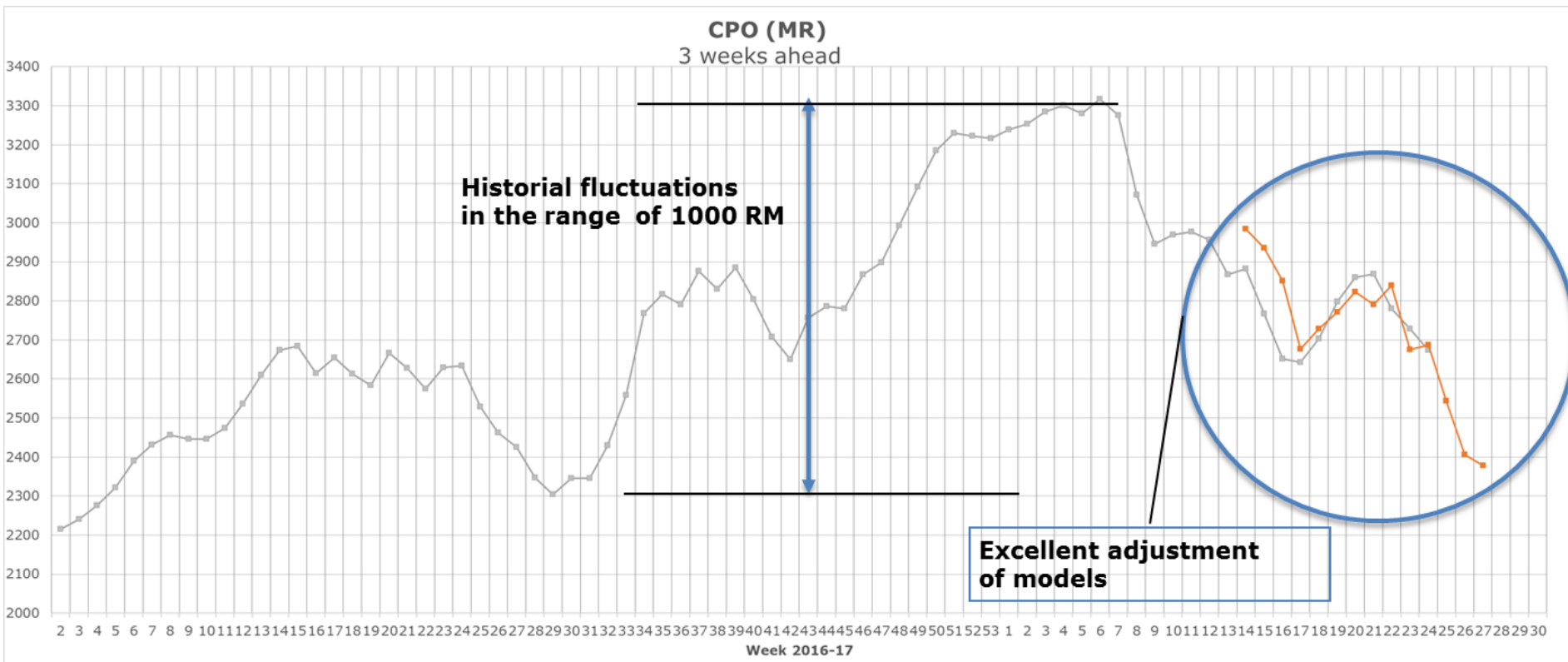
**soluciones aplicables en toda la cadena de valor**

# Gestión producción agraria



**Proyecto operando en 80 Ha de invernadero**

# Mercado: precio de aceite de palma en Malasia



Proyecto para cliente de Singapur

# Compañías en Agtech

**AG TECH: 100+ TECHNOLOGY COMPANIES CHANGING THE FARM**

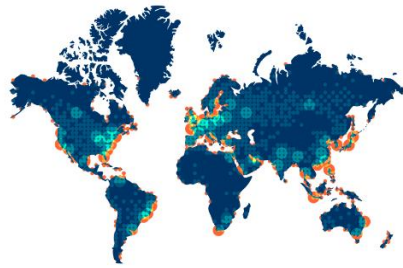




# Compañías Inteligencia Artificial

## 5 USE CASES OF AI + ROBOTICS IN AGRICULTURE

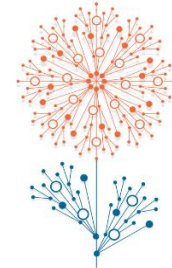
### ANALYZING SATELLITE IMAGES



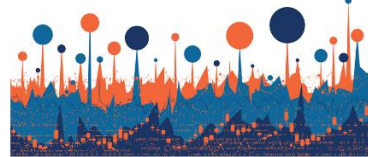
### IN-FIELD MONITORING



### ASSESSING CROP/SOIL HEALTH



### PREDICTIVE ANALYTICS



### AGRICULTURAL ROBOTS



# Conclusiones

- **Hay demanda para producir más y mejor**
- **La tecnología ayuda a lograrlo**

**Decisiones Adecuadas = Competitividad**